



• ***BRIDGING  
THE DIVIDE*** •

An Introduction to  
LGBTQ+ Studies  
Week 3

## ● **OUR JOURNEY TOGETHER**

### **01.**

#### ***Week***

The Basics of Gender  
Identity & Sexual  
Orientation

### **02.**

#### ***Week***

Understanding the  
GenderQueer community

### **03.**

#### ***Week***

Understanding the GenderQueer  
community (continued)  
Bridging the Divide Workshop





**03**

***WEEK***

Bridging the Divide

# ● WEEK 3

## 01. *Gender care*

What is it and why does it matter?

## 02. *Bridging the Divide*

Workshop!

## 03. *Q&A*

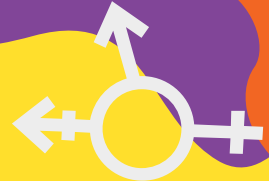




**01**

# ***GENDER CARE***

What is it? What do we  
need to know?



## ● *Gender Affirming Care*

- Interventions “designed to **support and affirm** an individual’s gender identity”
- Interventions fall along a **continuum**
- **Timing** based on several factors



# *What is Gender Affirming Care?*



# Gender affirming care for cis folks 😏





● **Transitioning...**



**Social  
Transition**



**Medical  
Transition**



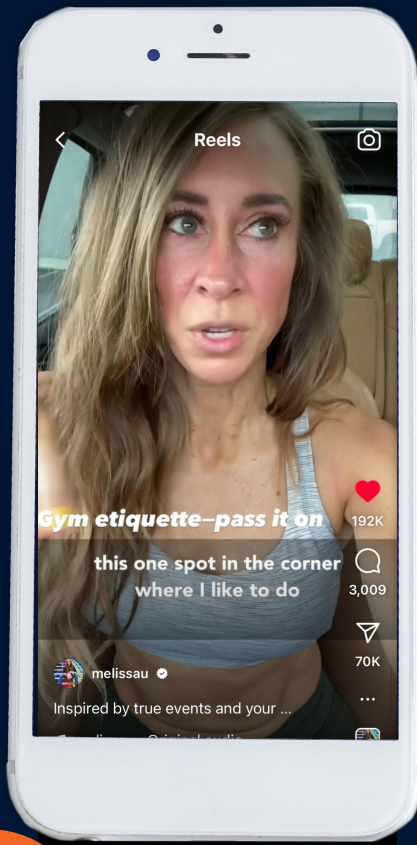
**Surgical  
Transition**



# *HER STORY: Sgt. Jessica Hawkins*



[Sources](#)



# *Do & Don't*

Conversational Care for the Genderqueer Community

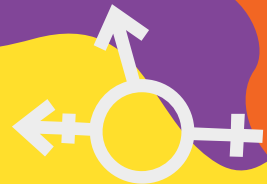



(And a fun refresher on pronouns)



**02**

***Bridging the  
Divide Workshop***





# ***FAQ'S***